

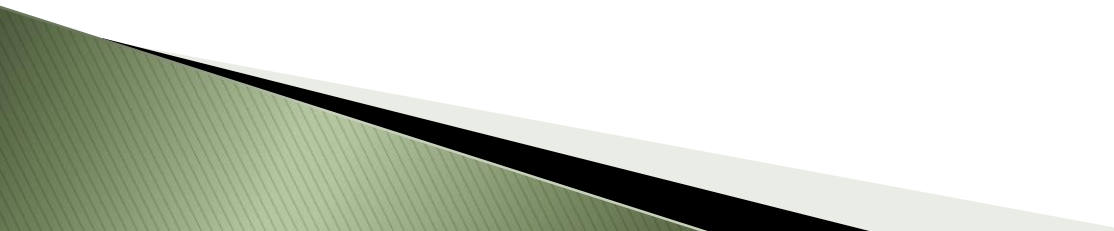


Ground-Level Monitoring Committee Meeting

September 28, 2017


Agenda

- ▶ Scope and Schedule: 2017-18 Ground-Level Monitoring Program and Annual Report
 - Overview of the Monitoring Program for FY 2017-18
 - 2017-18 Annual Report of the GLMC

 - ▶ Scope and Schedule: Implementation of the Northwest MZ-1 Work Plan
 - Overview of the Work Plan
 - Installation of the Pomona Extensometer Facility
 - Implementation of the Monitoring Program
- 

SCOPE and SCHEDULE: GLMP and Northwest MZ-1

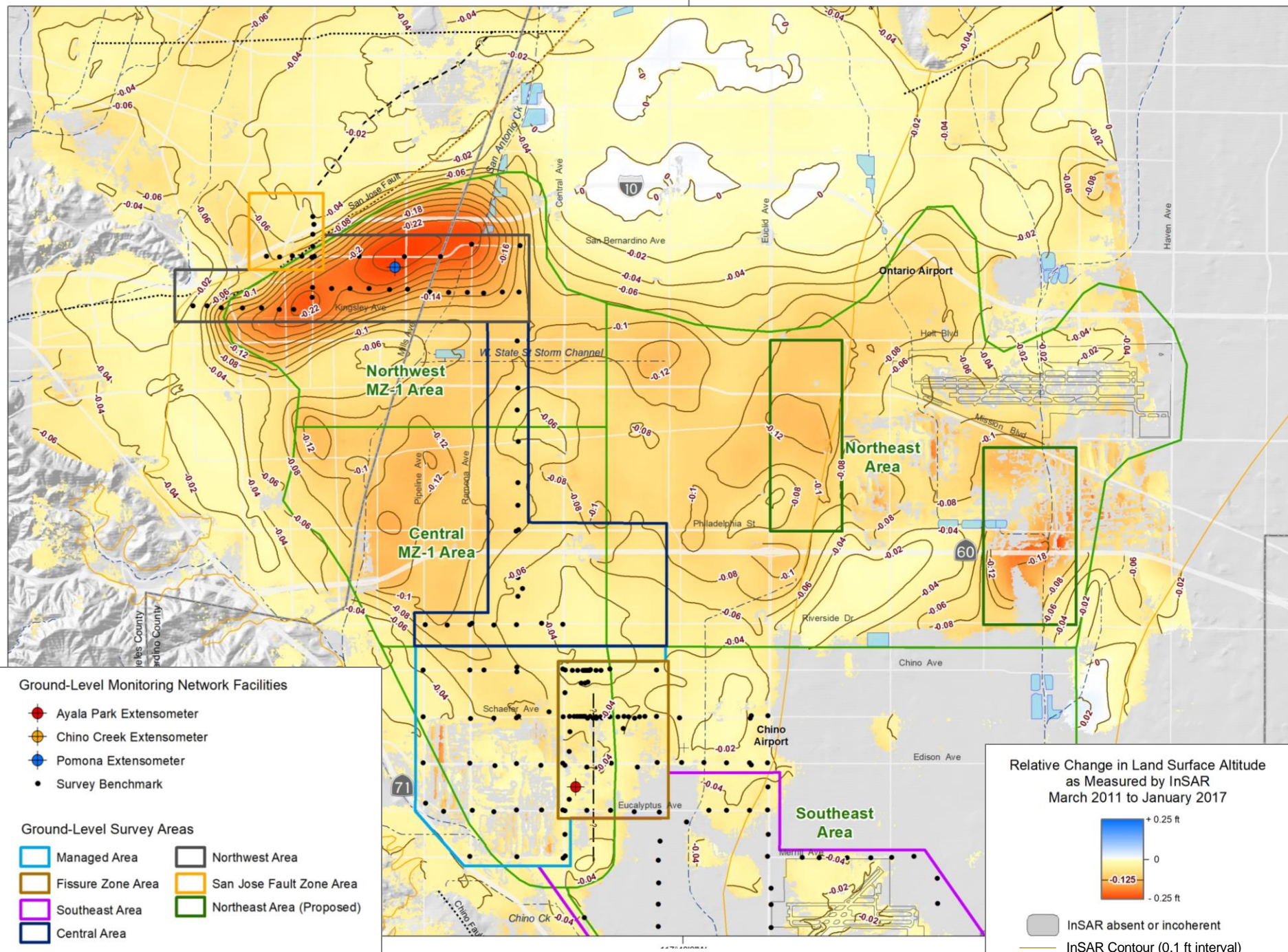
Task Description		FY2017-18				FY2018-19				FY2019-20				FY2020-21				FY2021-22			
		Q 1	Q 2	Q 3	Q 4	Q 1	Q 2	Q 3	Q 4	Q 1	Q 2	Q 3	Q 4	Q 1	Q 2	Q 3	Q 4	Q 1	Q 2	Q 3	Q 4
1	Maintenance of the Monitoring Network				Monthly maintenance of the Ayala Park, Chino Creek, and Pomona Extensometer Facilities																
2	Aquifer-System Monitoring and Testing																				
3	InSAR																				
4	Ground-Level Surveys																				
5	Prepare the GLMC Annual Report																				
6.1	Prepare Scope and Budget																				
6.2	Implementation Meetings																				
7.1	Describe the Initial Hydrogeologic Conceptual Model and Monitoring and Testing Program																				
7.2	Implement the Initial Monitoring Program and Perform Passive Monitoring																				
7.3	Develop and Evaluate the Baseline Management Alternative (BMA) the Initial Subsidence-Management Alternative (ISMA)																				
7.4	Design and Install the Pomona Extensometer Facility (PX)																				
7.5	Conduct Aquifer-System Stress Tests																				
7.6	Update the Hydrogeologic Conceptual Model of the Northwest MZ-1 Area																				
7.7	Update the Chino Basin Groundwater Model																				
7.8	Refine and Evaluate Subsidence-Management Alternatives																				
7.9	Update the Chino Basin Subsidence Management Plan																				

 Data Review and Analysis

 Draft Report Milestone

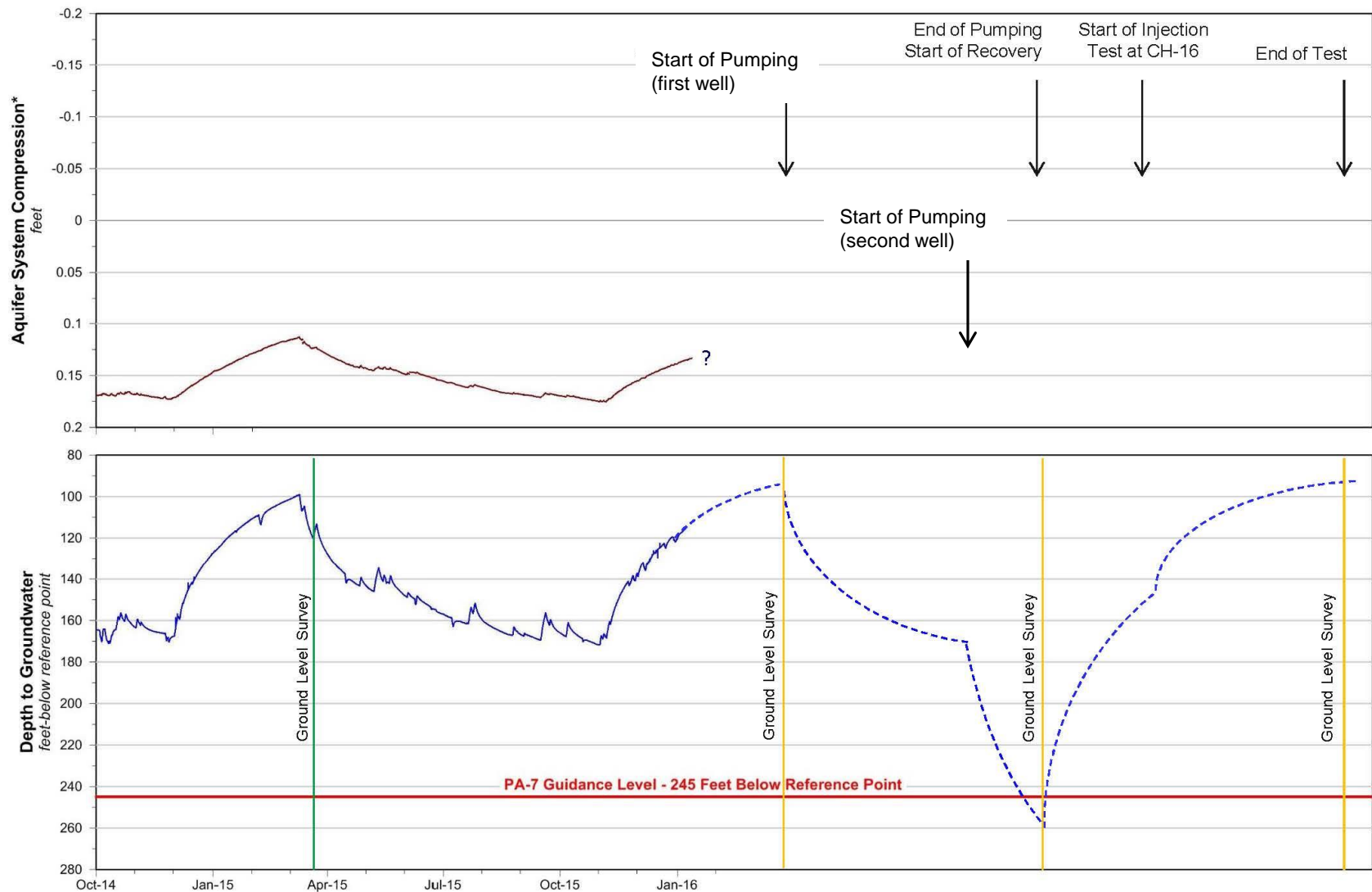
 Final Report Milestone

 GLMC Meetings



Discussion

- ▶ Long-term pumping test and injection test
- ▶ Analysis of differential subsidence across the Fissure Zone and San Jose Fault Zone



Prepared by:



Author: TCR
Date: 20160308
Filename: Figure_4-2_base.grf

Aquifer System Compression (Aquifer System Depth Interval)

— Ayala Park Deep Extensometer (30-1,400 feet-bgs)

Groundwater Levels at Wells (Well-Screen Interval)

— PA-7 (438-448 feet-bgs)

- - - Predicted Record for PA-7 During Test

— Existing Ground-Level Survey

— Planned Ground-Level Survey

Ground-Level Monitoring Committee
2015 Annual Report



Long-Term Pumping Test
Managed Area

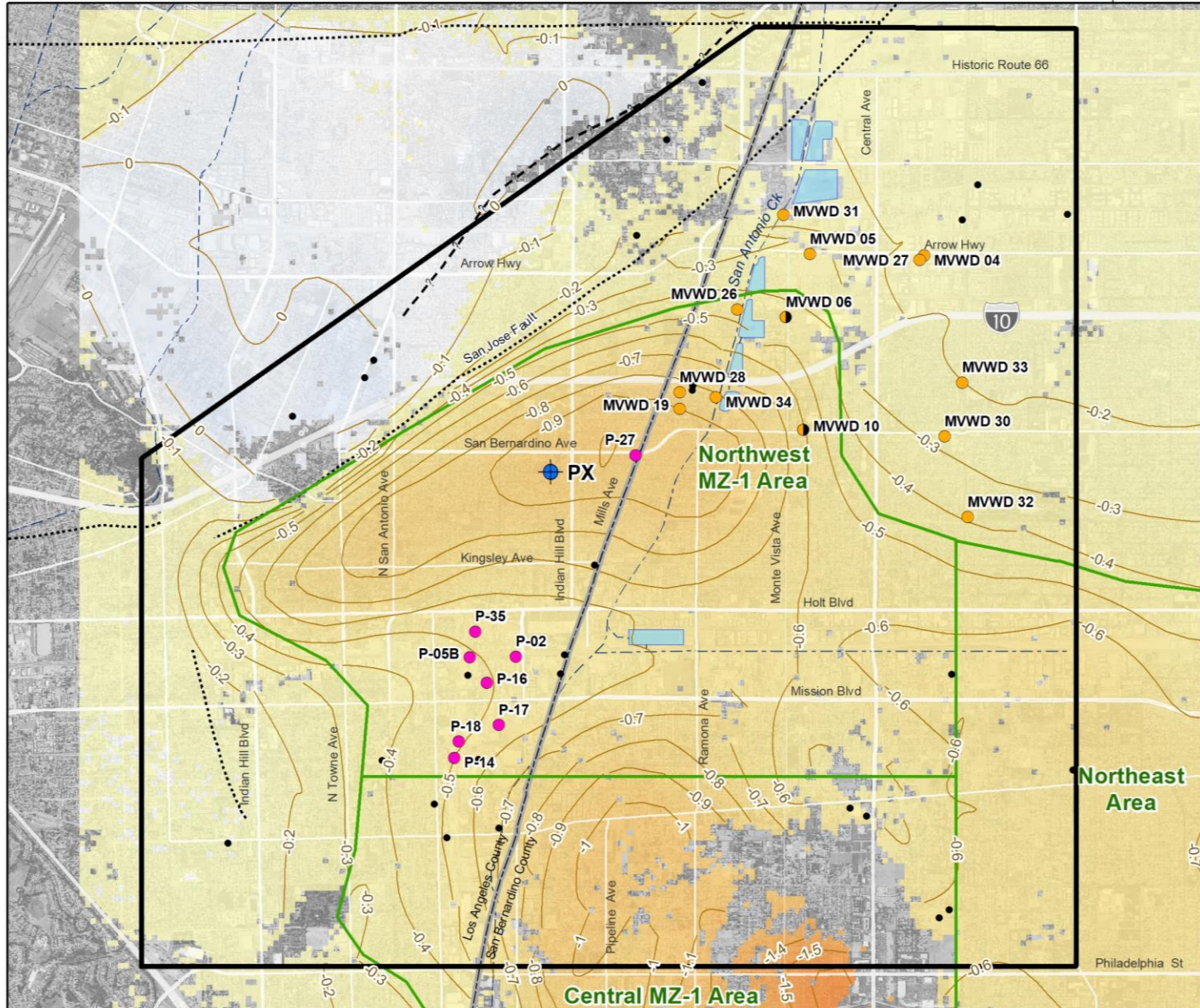
Figure 4-2

*Positive compression values represent compression of soils, negative compression values represent expansion of soils.

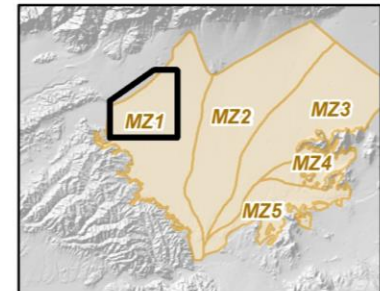
Design and Install the Pomona Extensometer Facility

Task	Completion Date
Siting Study	Completed
Draft Technical Specifications	Completed
City of Pomona Approval, CEQA Finalization, and Construction and Permanent Easements	November 2017
Prepare Bid Package and Conduct Bidding Process	December 2017
Drill and Install the PX Piezometers	April 2018
Install the PX Extensometers	June 2018
Design and Begin Aquifer–System Stress Tests	July 2018

Northwest MZ-1 Monitoring Program Implementation



2014 NAIP Mosaic +/- 6 meter Resolution



GLMC Next Meeting

- ▶ October 26, 2017 (9:00 AM) at Watermaster
 - Northwest MZ-1 Monitoring Program Update
 - Pomona Extensometer Update
 - Draft Technical Memorandum
 - Baseline Management Alternative
 - Initial Subsidence-Management Alternative